

Figure 23: The extent of HLC polygons within the northern part of ASMRP 9 that are of the same type as the sample area

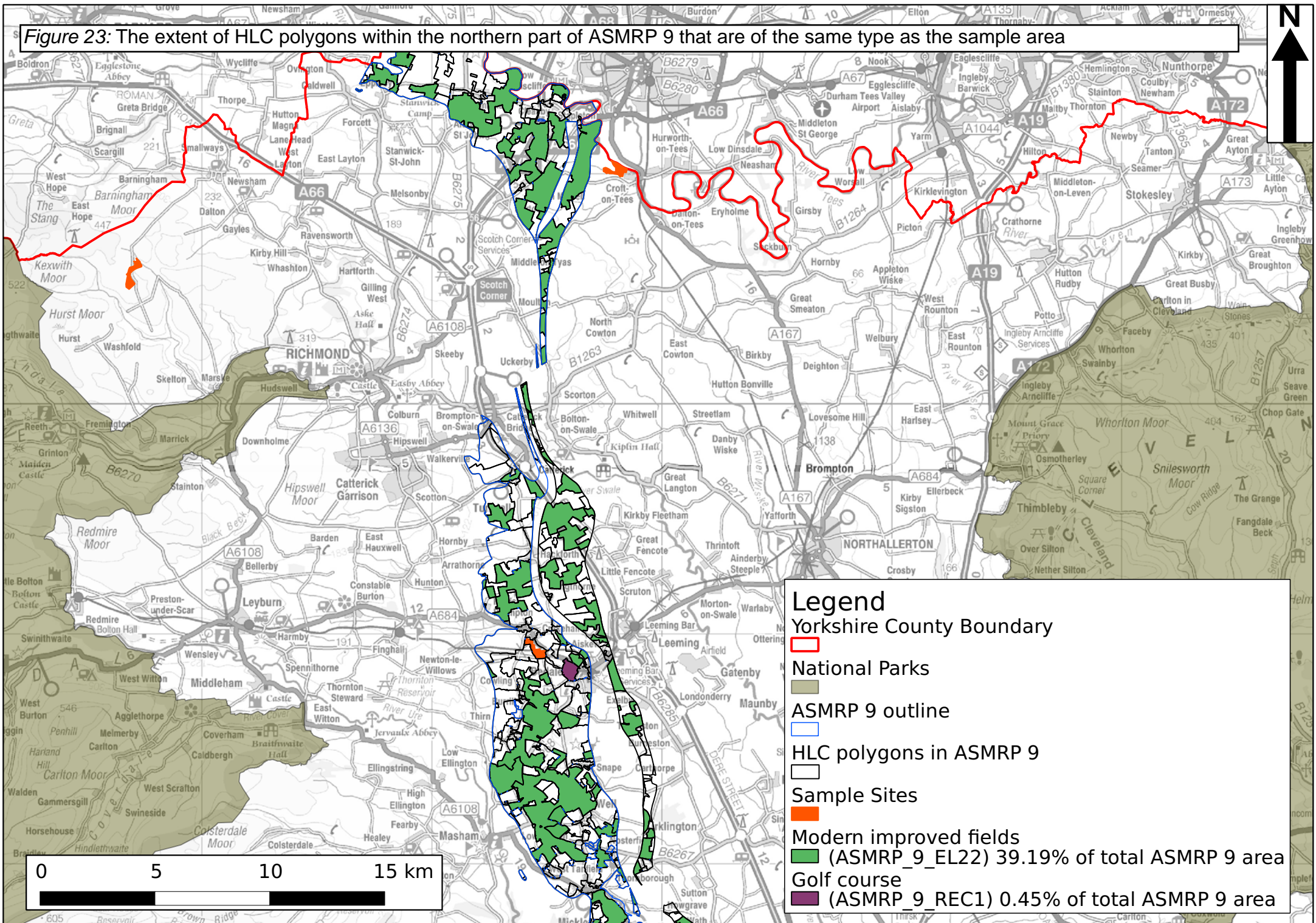


Figure 24: The extent of HLC polygons within the central part of ASMRP 9 that are of the same type as the sample area

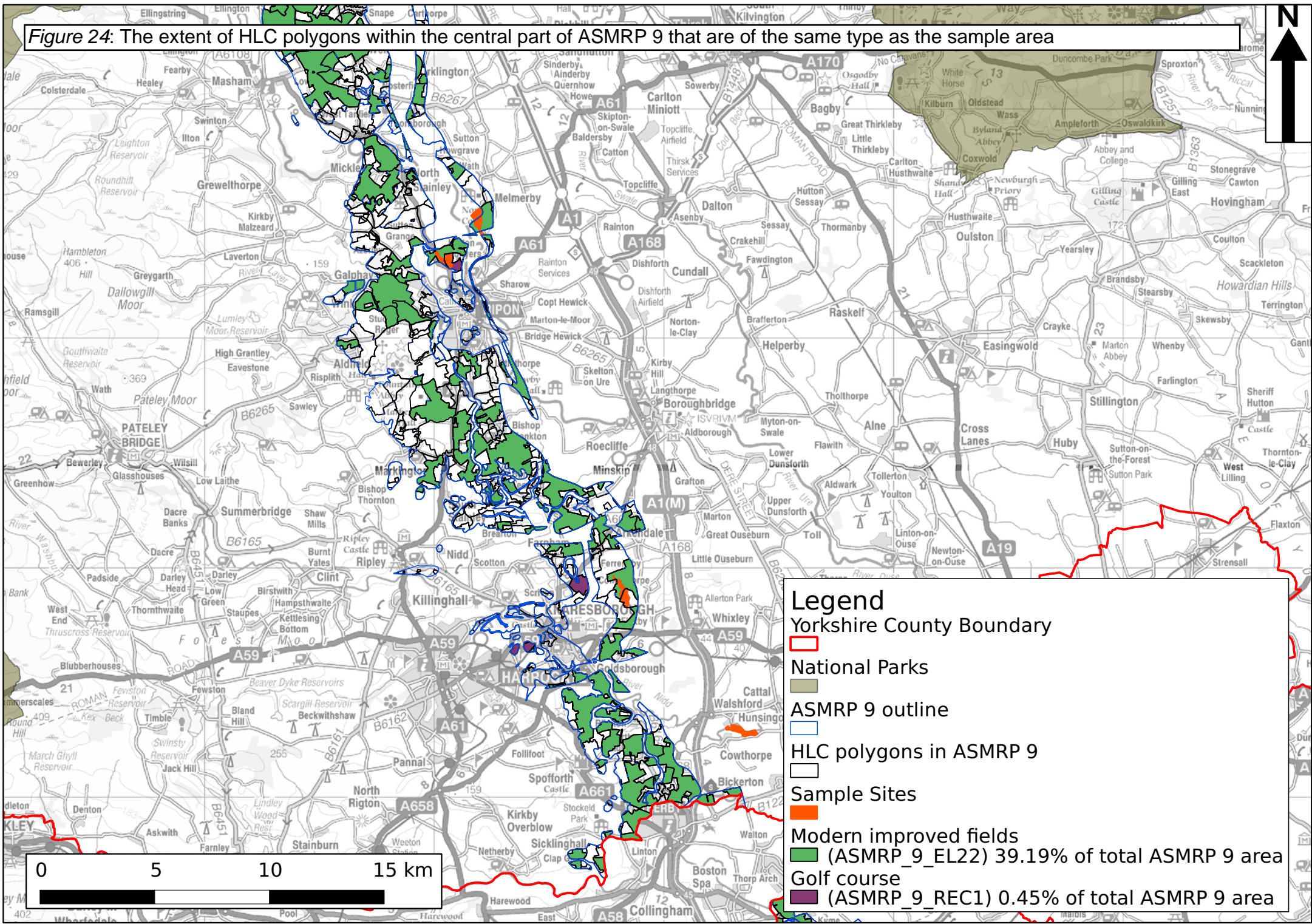


Figure 25: The extent of HLC polygons within the southern part of ASMRP 9 that are of the same type as the sample area

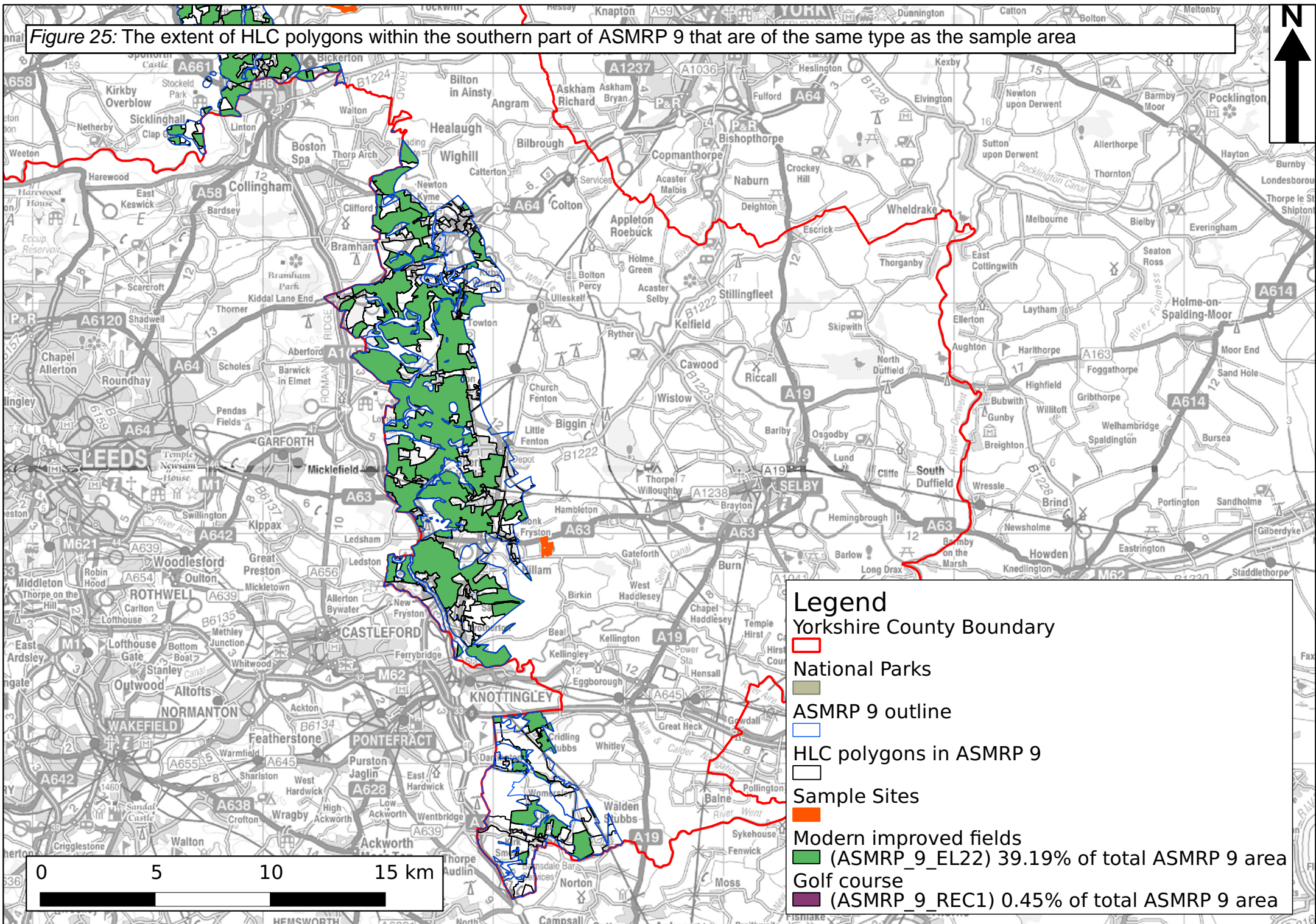


Figure 26: The extent of HLC polygons within the western part of ASMRP 12 that are of the same type as the sample area

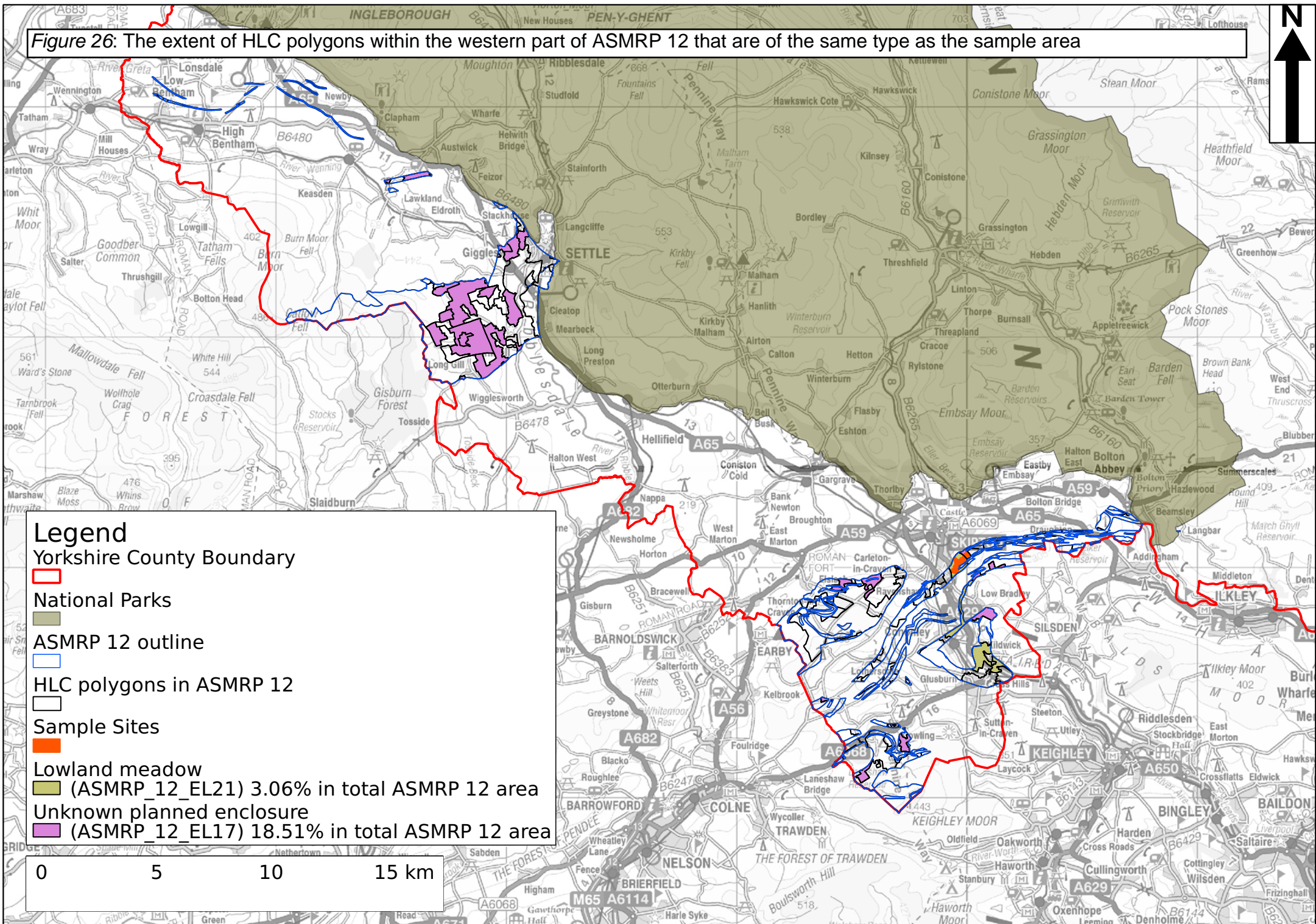
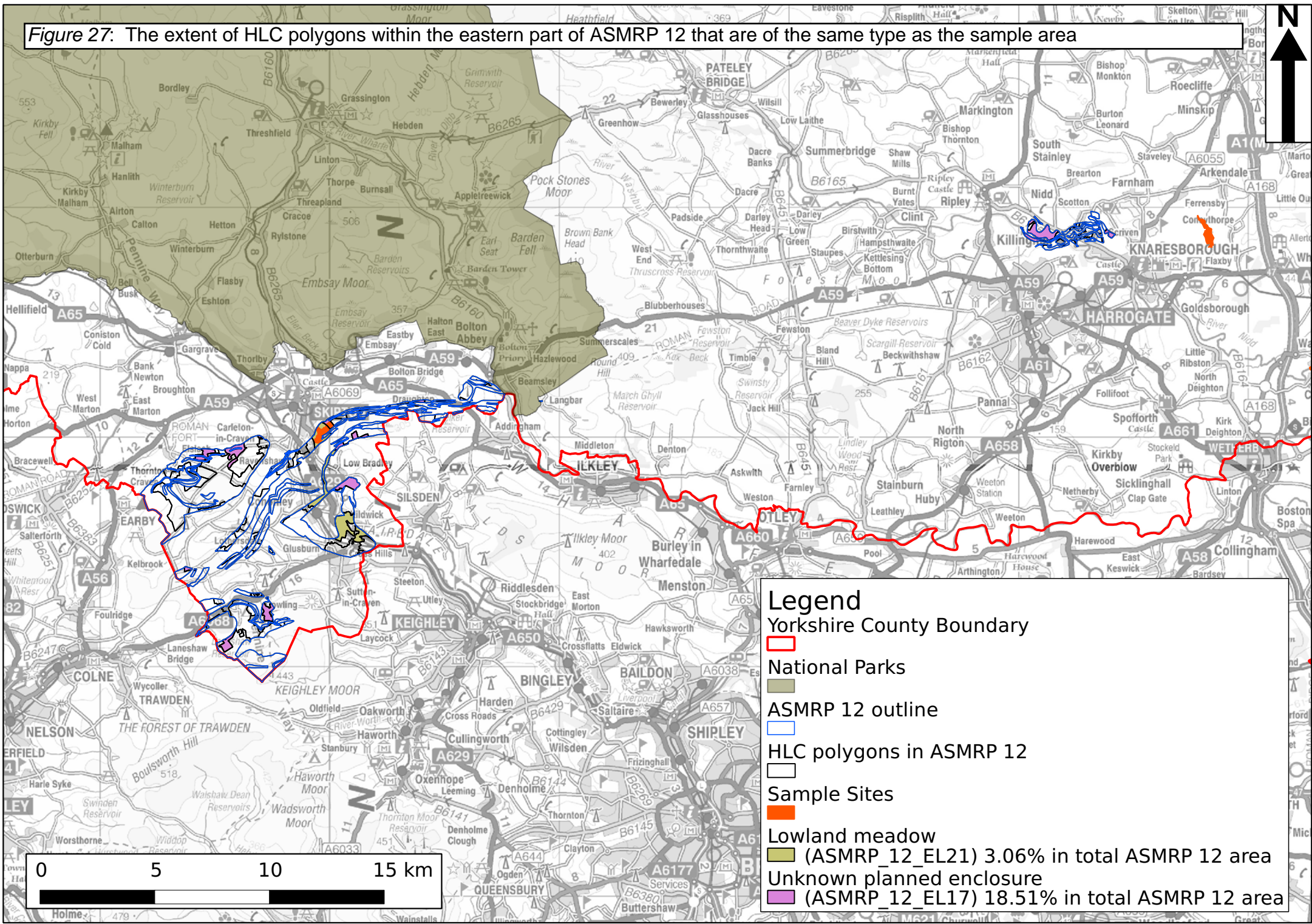


Figure 27: The extent of HLC polygons within the eastern part of ASMRP 12 that are of the same type as the sample area



Legend

- Yorkshire County Boundary
- National Parks
- ASMRP 12 outline
- HLC polygons in ASMRP 12
- Sample Sites
- Lowland meadow (ASMRP_12_EL21) 3.06% in total ASMRP 12 area
- Unknown planned enclosure
- Lowland meadow (ASMRP_12_EL17) 18.51% in total ASMRP 12 area

Figure 28: The extent of HLC polygons within the northern part of ASMRP 14 that are of the same type as the sample area

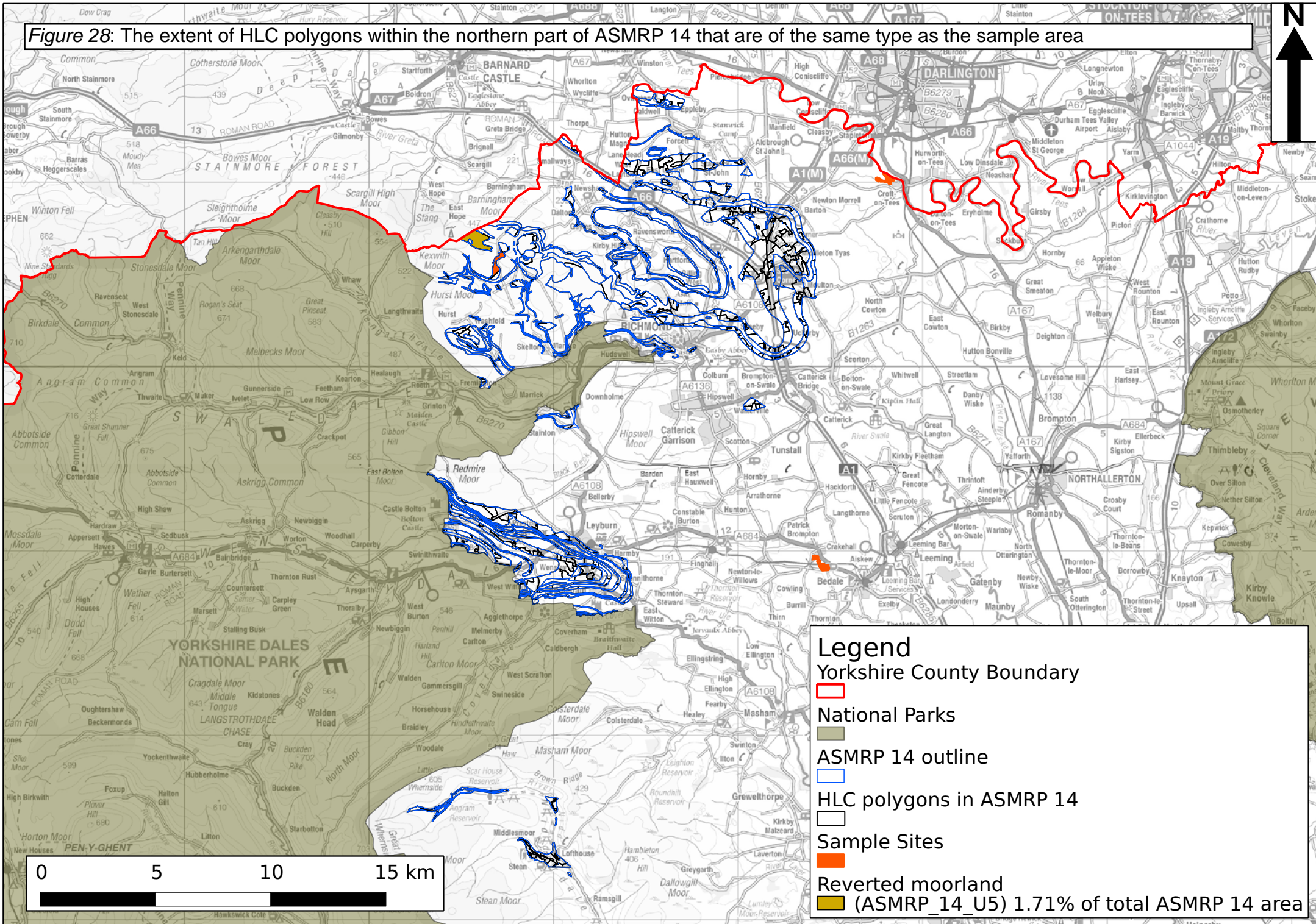


Figure 29: The extent of HLC polygons within the western part of ASMRP 14 that are of the same type as the sample area

