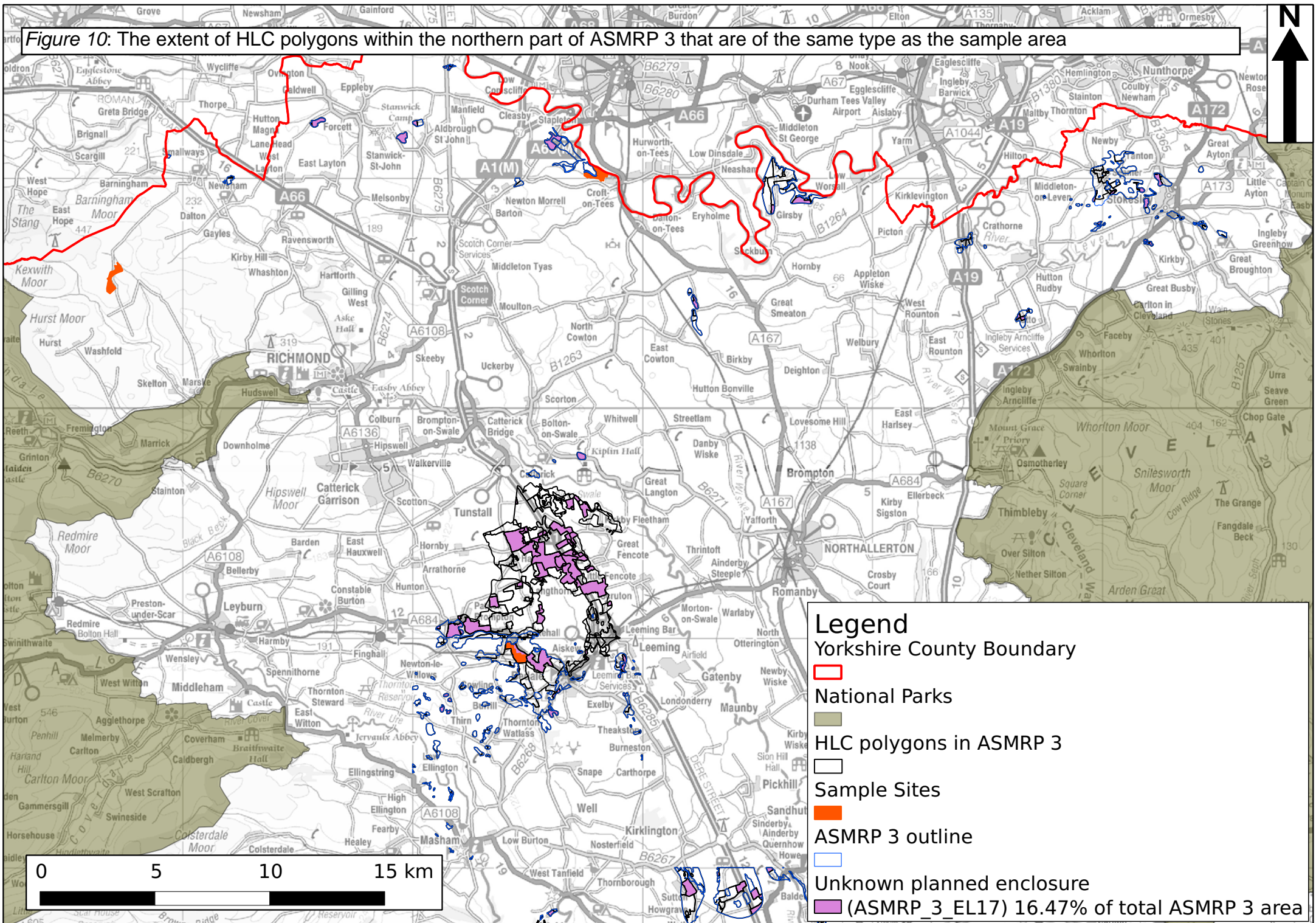


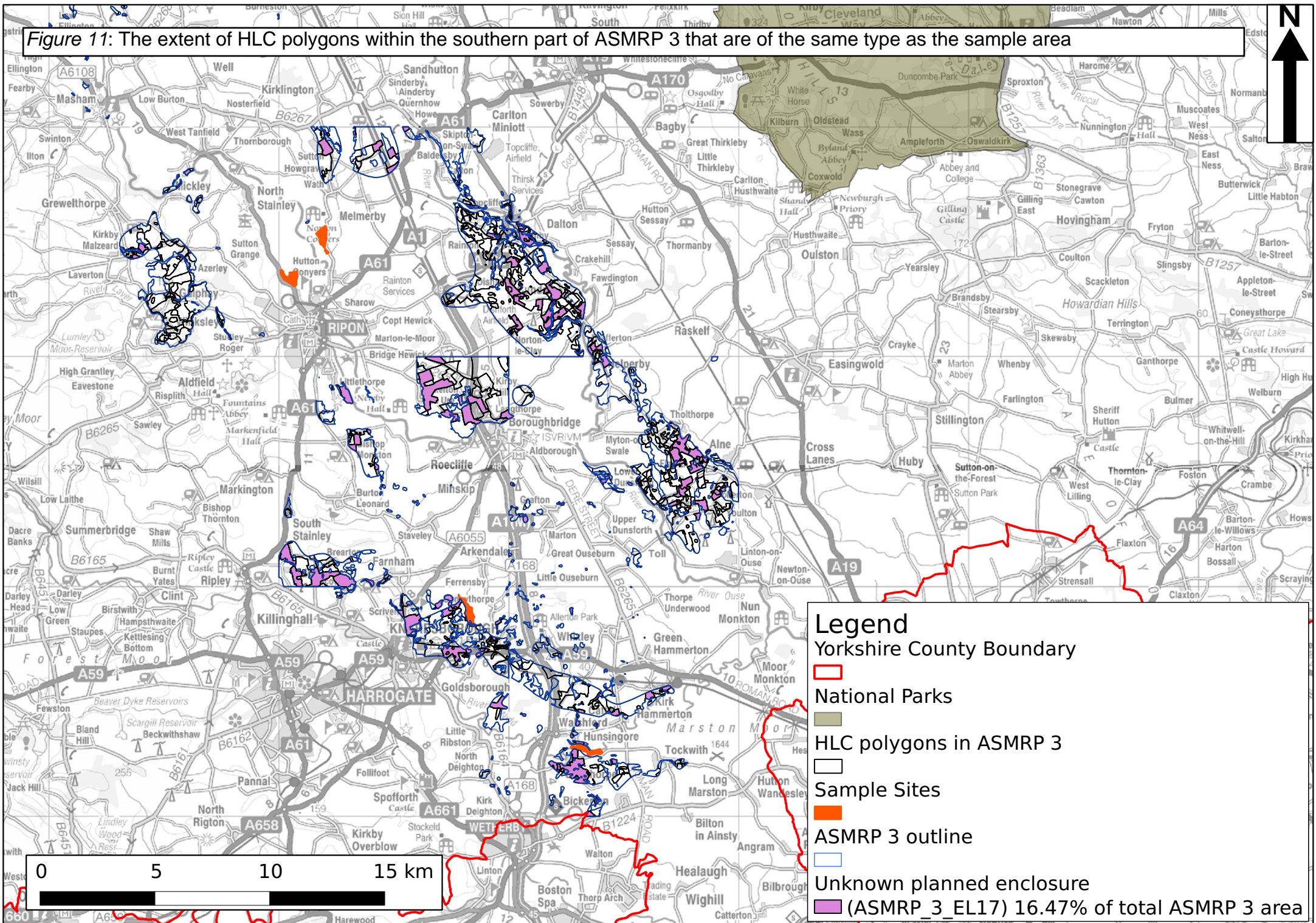
Figure 10: The extent of HLC polygons within the northern part of ASMRP 3 that are of the same type as the sample area



Legend

- Yorkshire County Boundary
- National Parks
- HLC polygons in ASMRP 3
- Sample Sites
- ASMRP 3 outline
- Unknown planned enclosure
- (ASMRP_3_EL17) 16.47% of total ASMRP 3 area

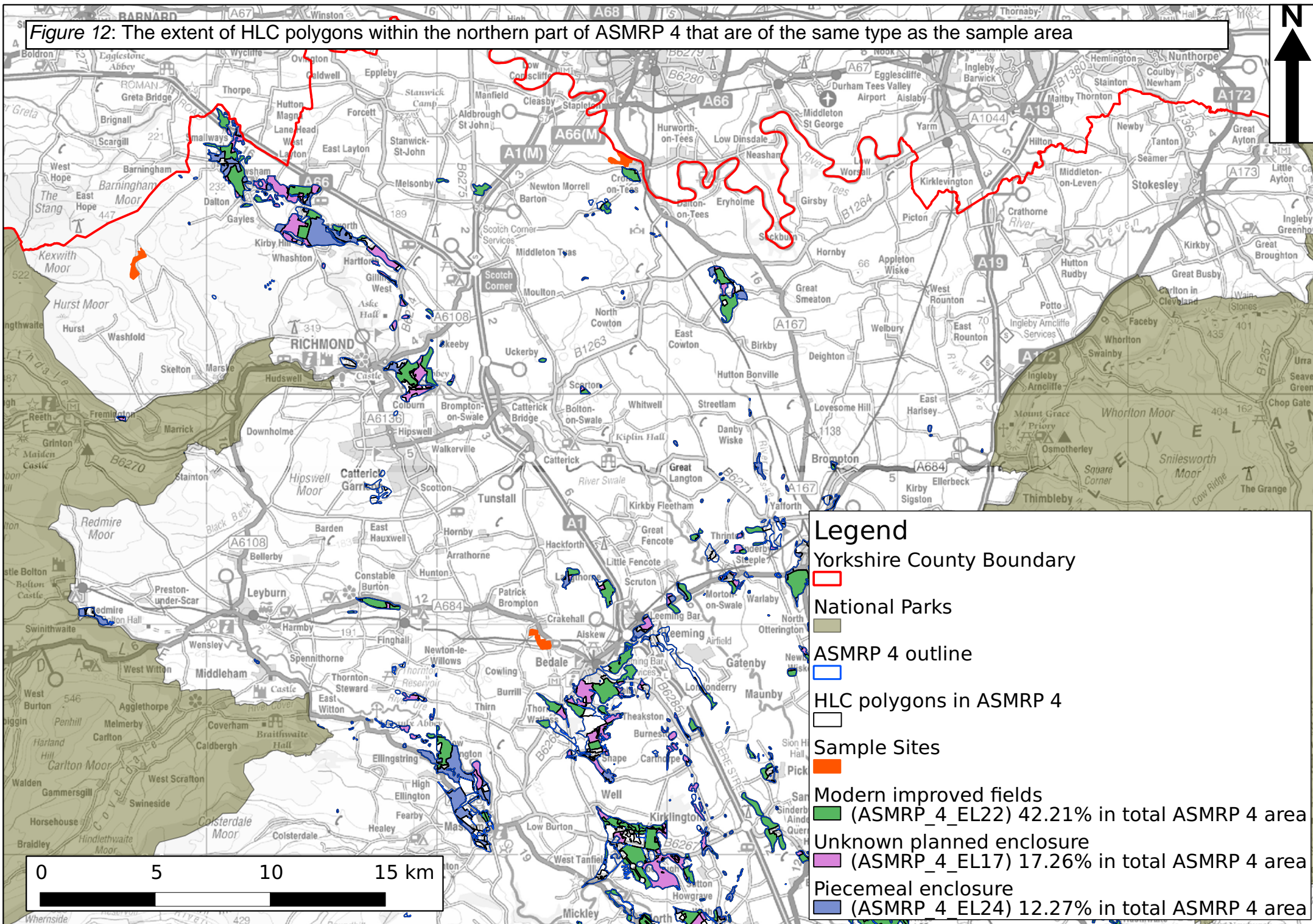
Figure 11: The extent of HLC polygons within the southern part of ASMRP 3 that are of the same type as the sample area



Legend

- Yorkshire County Boundary
- National Parks
- HLC polygons in ASMRP 3
- Sample Sites
- ASMRP 3 outline
- Unknown planned enclosure
- (ASMRP_3_EL17) 16.47% of total ASMRP 3 area

Figure 12: The extent of HLC polygons within the northern part of ASMRP 4 that are of the same type as the sample area



Legend

- Yorkshire County Boundary
- National Parks
- ASMRP 4 outline
- HLC polygons in ASMRP 4
- Sample Sites
- Modern improved fields (ASMRP_4_EL22) 42.21% in total ASMRP 4 area
- Unknown planned enclosure (ASMRP_4_EL17) 17.26% in total ASMRP 4 area
- Piecemeal enclosure (ASMRP_4_EL24) 12.27% in total ASMRP 4 area

Figure 13: The extent of HLC polygons within the central part of ASMRP 4 that are of the same type as the sample area

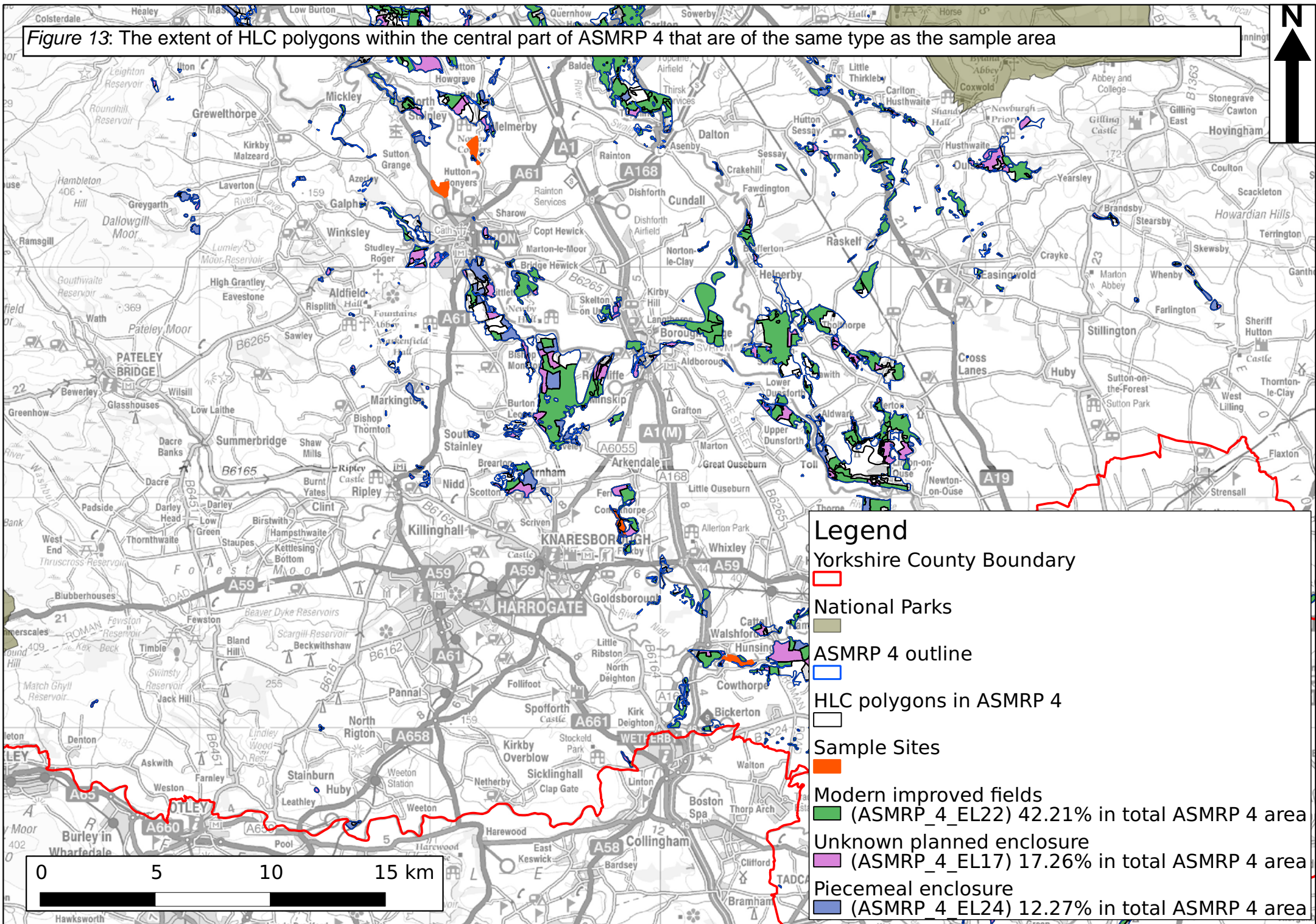


Figure 14: The extent of HLC polygons within the southern part of ASMRP 4 that are of the same type as the sample area

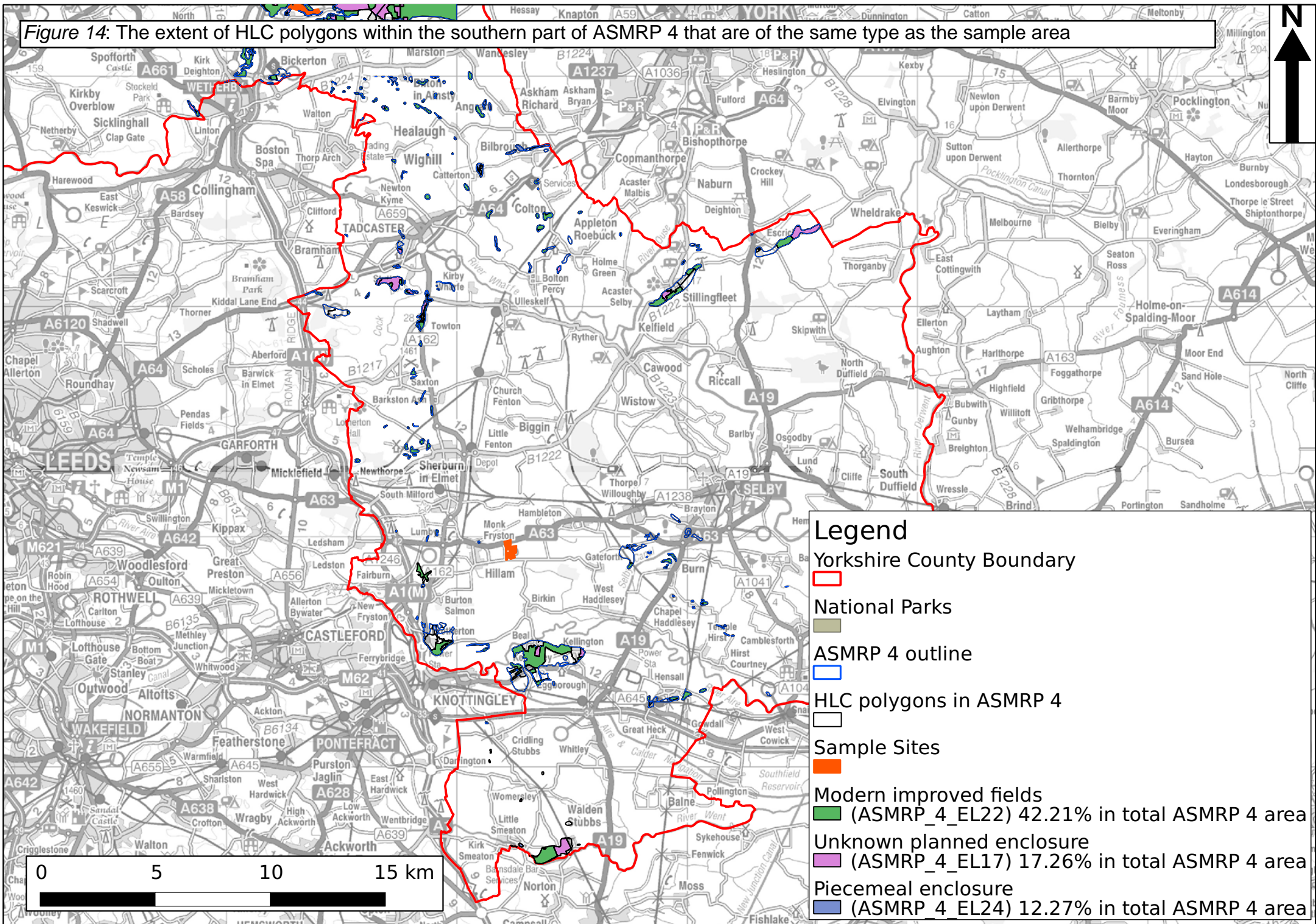


Figure 15: The extent of HLC polygons within the eastern part of ASMRP 4 that are of the same type as the sample area

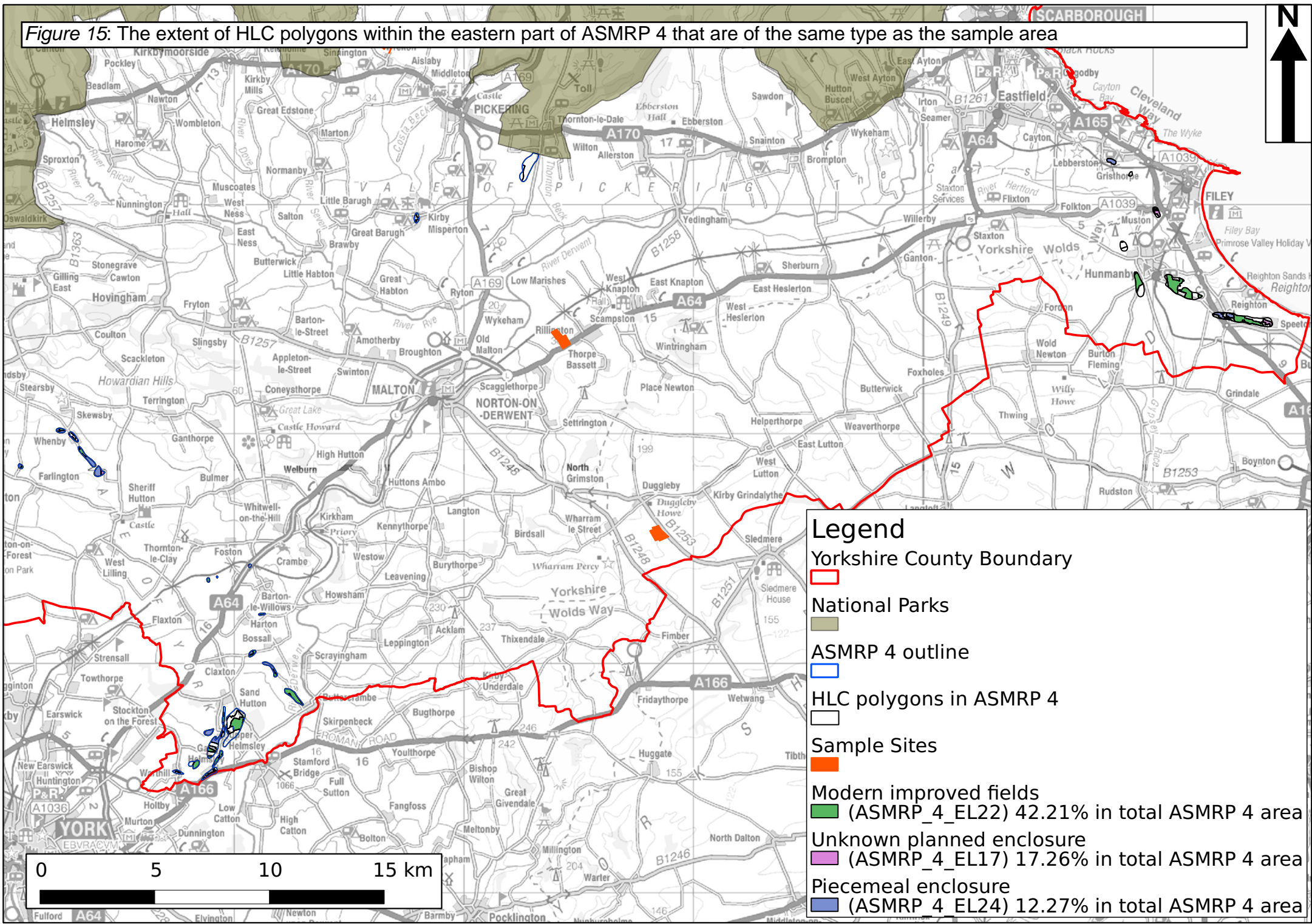


Figure 16: The extent of HLC polygons within the western part of ASMRP 4 that are of the same type as the sample area

