

Appendix Five

Historic Landscape Characterisation

The sample areas for each ASMRP were intended to be representative of the rest of the ASMRP. The figures presented in this appendix show the extent of the HLC types, within each ASMRP, that are similar to those in each of the sample areas. This provides an indication of the historic character of the sample area, and the extent to which that character is reflected throughout the rest of the ASMRP. In many instances the sample areas reflect the historic character of approximately 30-40 % of the rest of the ASMRP and demonstrate that these are representative of the wider landscapes.

Table of Analysis Results		Figure 21	ASMRP 7
		Figure 22	ASMRP 8
Figure 1	ASMRP 1	Figure 23	ASMRP 9
Figure 2	ASMRP 1	Figure 24	ASMRP 9
Figure 3	ASMRP 1	Figure 25	ASMRP 9
Figure 4	ASMRP 1	Figure 26	ASMRP 12
Figure 5	ASMRP 1	Figure 27	ASMRP 12
Figure 6	ASMRP 1	Figure 28	ASMRP 14
Figure 7	ASMRP 2	Figure 29	ASMRP 14
Figure 8	ASMRP 2		
Figure 9	ASMRP 2		
Figure 10	ASMRP 3		
Figure 11	ASMRP 3		
Figure 12	ASMRP 4		
Figure 13	ASMRP 4		
Figure 14	ASMRP 4		
Figure 15	ASMRP 4		
Figure 16	ASMRP 4		
Figure 17	ASMRP 5		
Figure 18	ASMRP 6		
Figure 19	ASMRP 6		
Figure 20	ASMRP 6		

Historic Landscape Characterisation

Sample Site	HLC Code 1	HLC Type 1	HLC Type Code 2	HLC Type 2	HLC Type Code 3	HLC Type 3	Area of whole ASMRP (ha)	Area of sample site (ha)	Area of HLC Type 1 covering ASMRP (ha)	Percentage of ASMRP covered by HLC Type 1	Percentage of Sample Site covered by HLC Type 1	Area of HLC Type 2 covering ASMRP (ha)	Percentage of ASMRP covered by HLC Type 2	Percentage of Sample Site covered by HLC Type 2	Area of HLC Type 3 covering ASMRP (ha)	Percentage of ASMRP covered by HLC Type 3	Percentage of Sample Site covered by HLC Type 3
ASMRP 1.1	EL22	Modern improved fields	-	-	-	-	16169.86	30.00	5670.14	35.07%	1.00%	-	-	-	-	-	-
ASMRP 1.2	EL22	Modern improved fields	EL17	planned enclosure	-	-	16169.86	30.00	5670.14	35.07%	87.77%	3475.47	21.49%	12.23% (3.67ha)	-	-	-
ASMRP 2	EL22	Modern improved fields	EL24	Piecemeal enclosure	-	-	4970.28	30.00	1571.41	31.62%	77.10% (23.13ha)	926.82	18.64%	22.90%	-	-	-
ASMRP 3	EL17	Unknown planned enclosure	-	-	-	-	13990.26	31.00	2304.50	16.47%	1.00%	-	-	-	-	-	-
ASMRP 4	EL22	Modern improved fields	EL17	Unknown planned enclosure	EL24	Piecemeal enclosure	15045.79	30.00	6350.11	42.21%	37.60% (11.28ha)	2596.76	17.26%	61.91% (18.58ha)	1846.38	12.27%	1.38% (0.41ha)
ASMRP 5	EL12	Planned large scale parliamentary enclosure	-	-	-	-	9559.17	30.00	3433.98	35.92%	1.00%	-	-	-	-	-	-
ASMRP 6	EL12	Planned large scale parliamentary enclosure	EL22	Modern improved fields	-	-	38976.99	31.00	6054.38	15.53%	71.52% (22.17ha)	19532.21	50.11%	28.48%	-	-	-
ASMRP 7	EL16	Large scale private enclosure	-	-	-	-	24775.99	30.00	962.99	3.88%	1.00%	-	-	-	-	-	-
ASMRP 8	EL12	Planned large scale parliamentary enclosure	EL22	Modern improved fields	EL24	Piecemeal enclosure	2167.11	30.00	560.78	25.88%	6.55% (1.97ha)	512.41	23.64%	28.47% (8.54ha)	176.73	8.15%	64.21% (19.26ha)
ASMRP 9	EL22	Modern improved fields	REC1	Golf course	-	-	34363.00	31.00	13467.58	39.19%	38.43% (11.91ha)	156.14	0.45%	62.00%	-	-	-
ASMRP 12	EL21	Lowland meadow	EL17	planned enclosure	-	-	6154.64	30.00	188.14	3.06%	80.10% (24.03ha)	1139.72	18.51%	20.00%	-	-	-
ASMRP 14	U5	Reverted moorland	-	-	-	-	11672.87	31.00	200.08	1.71%	1.00%	-	-	-	-	-	-

Figure 1: The extent of HLC polygons within the northern part of ASMRP 1 that are of the same type as the 1.1 sample area

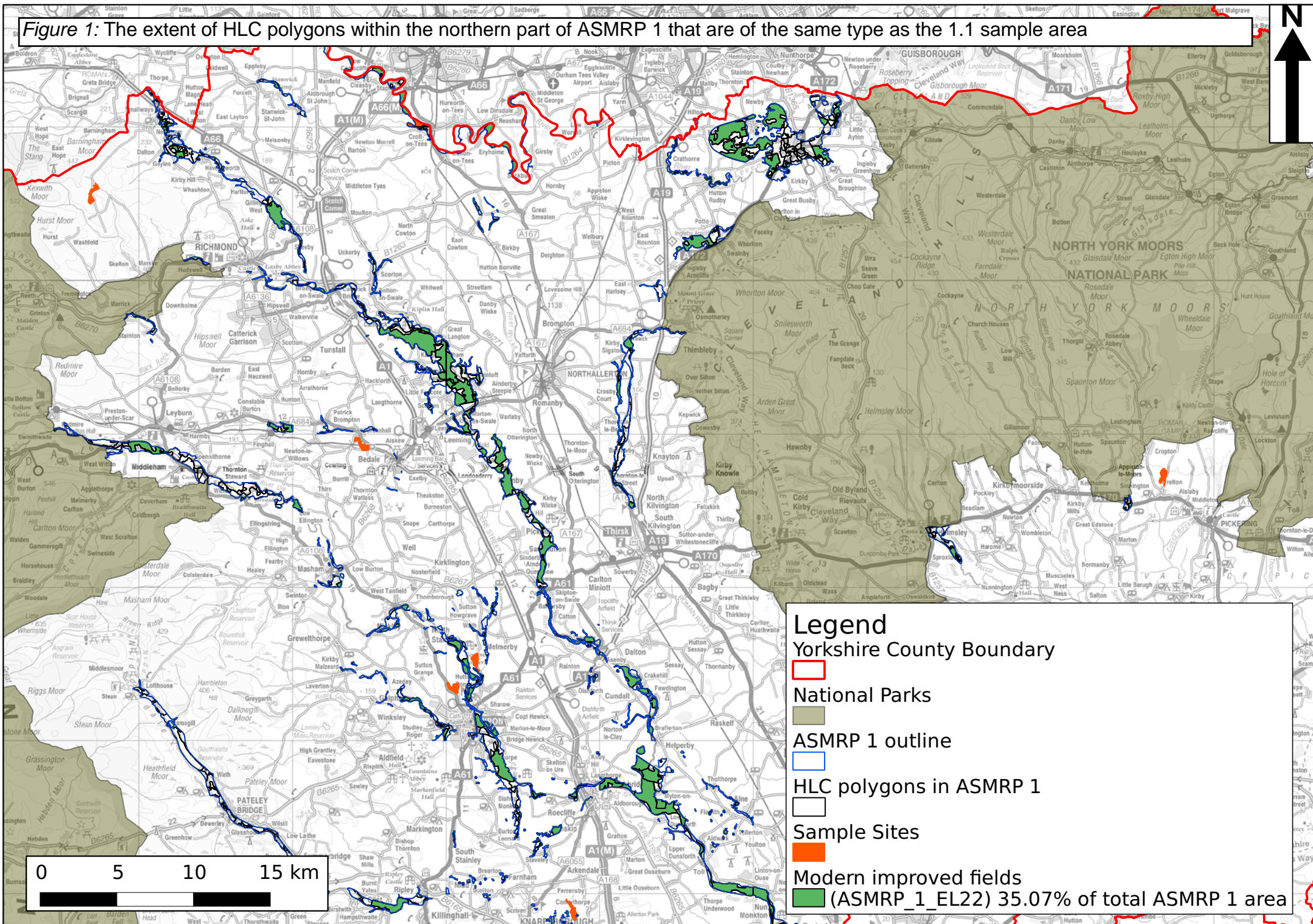


Figure 2: The extent of HLC polygons within the central part of ASMRP 1 that are of the same type as the 1.1 sample area

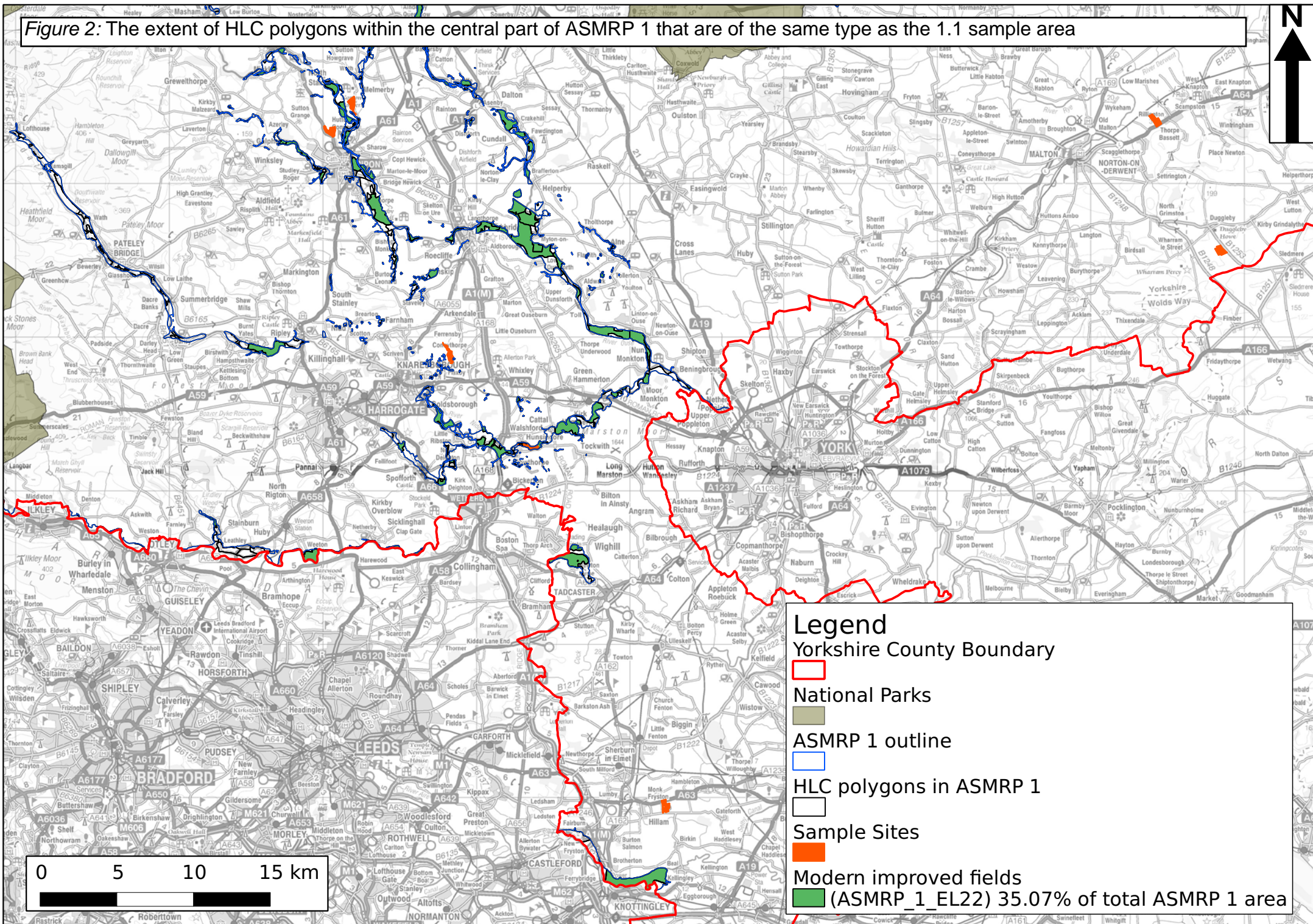
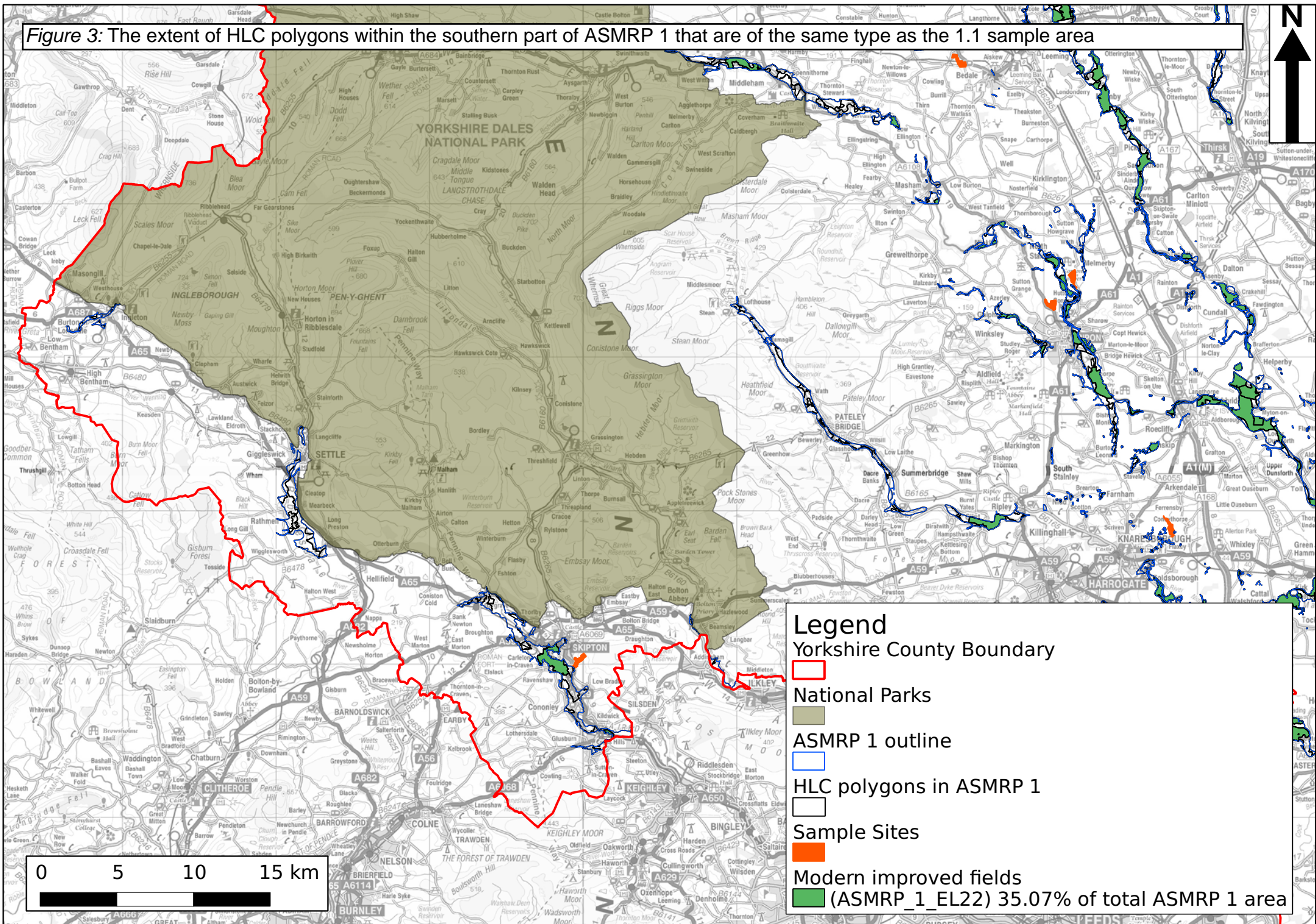


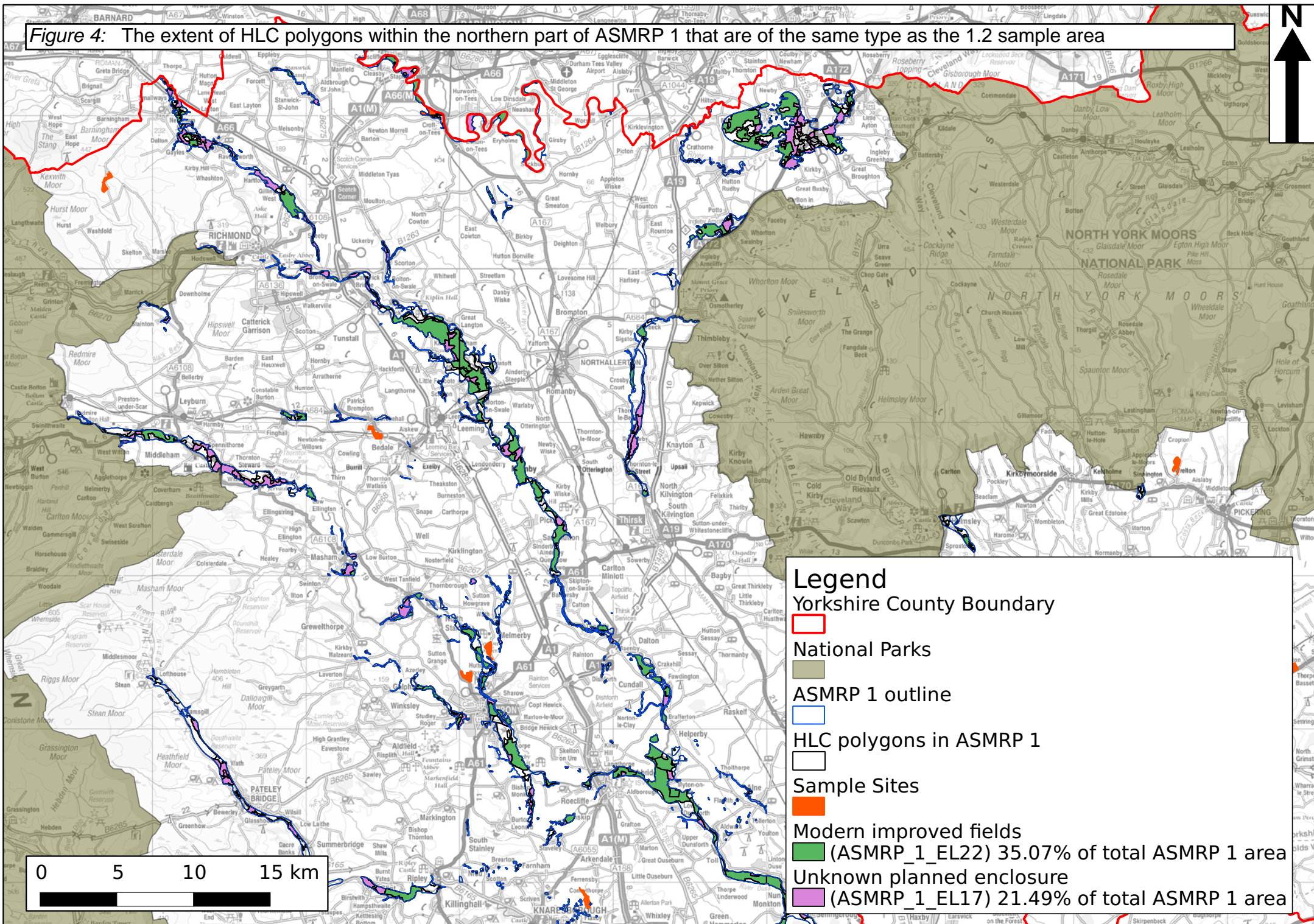
Figure 3: The extent of HLC polygons within the southern part of ASMRP 1 that are of the same type as the 1.1 sample area



Legend

- Yorkshire County Boundary ▭
- National Parks ▭
- ASMRP 1 outline ▭
- HLC polygons in ASMRP 1
- Sample Sites ▭
- Modern improved fields (ASMRP_1_EL22) 35.07% of total ASMRP 1 area ▭

Figure 4: The extent of HLC polygons within the northern part of ASMRP 1 that are of the same type as the 1.2 sample area



Legend

- Yorkshire County Boundary
- National Parks
- ASMRP 1 outline
- HLC polygons in ASMRP 1
- Sample Sites
- Modern improved fields (ASMRP_1_EL22) 35.07% of total ASMRP 1 area
- Unknown planned enclosure (ASMRP_1_EL17) 21.49% of total ASMRP 1 area

Figure 5: The extent of HLC polygons within the central part of ASMRP 1 that are of the same type as the 1.2 sample area

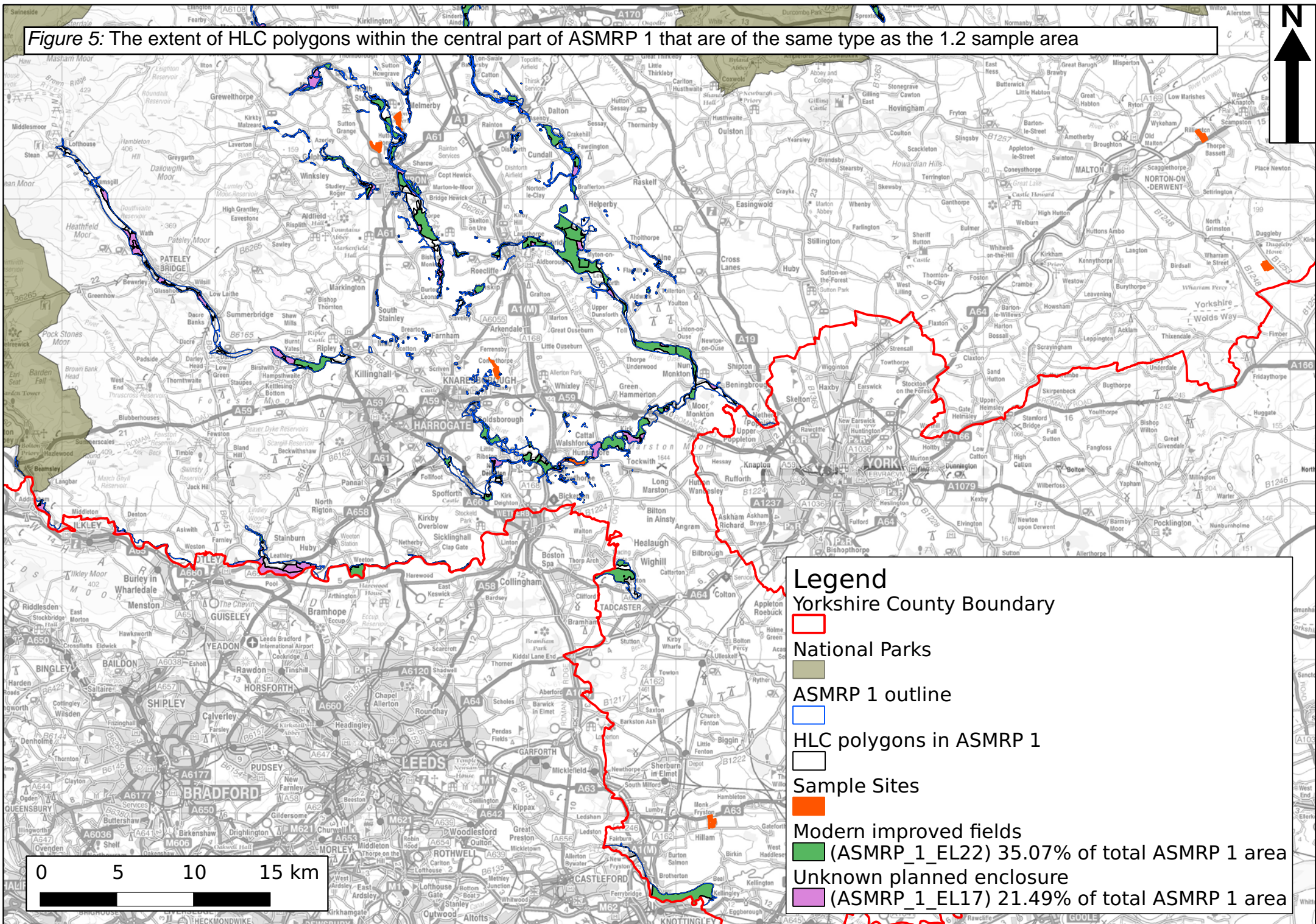


Figure 6: The extent of HLC polygons within the southern part of ASMRP 1 that are of the same type as the 1.2 sample area

