

**Key**

**Visual Aspects**

- Long Distance View
- Medium Distance View
- Short Distance View
- Prominent Feature
- Field Survey Locations
- Visual Boundary
- Key Ridgelines

**Features**

- PRoW and Access
- Scrub
- Parkland
- Woodland
- Watercourses
- 500m Buffer
- Sample Area

**Character Types**

- Levels Farmland (LF)
- River Plain Farmland (RPF)
- River Terrace (RT)
- Open Carr Vale Farmland (OCVF)
- Vale Farmland (VF)
- Vale Fringe (VFR)
- Lowland Rolling Farmland (LRF)
- Lowland Undulating Farmland (LUF)
- Transitional Farmland (TF)
- Chalk Foothills (CF)
- Chalk Wolds Rolling Farmland (CW)
- Limestone Foothills (LF)
- Upland Pasture Gritstone (UPG)
- Gritstone Low Moorland (GLM)
- Character Type, Gritstone High Moorland Slope (GHMS)

Scale 1:7,000

Client



(C) Crown Copyright and database right 2011. Ordnance Survey 100017946 North Yorkshire County Council

**NYCC/BES/18376**  
**Managing Landscape Change**

**ASMRP 1.1**  
**LANDSCAPE CHARACTER**

Drawn By	KJ
Checked By	AT
Approved By	JG
Drawing No	CS_049966_01_032_Rev1
Date	23 September 2011

**CAPITA SYMONDS**

The Capita Building  
 Kingmoor Business Park  
 Carlisle  
 CA6 4SJ





**Key**

**Visual Aspects**

- Long Distance View
- Medium Distance View
- Short Distance View
- Prominent Feature
- Field Survey Locations
- Visual Boundary
- Key Ridgelines

**Features**

- PRoW and Access
- Scrub
- Parkland
- Woodland
- Watercourses
- 500m Buffer
- Sample Area

**Character Types**

- Levels Farmland (LF)
- River Plain Farmland (RPF)
- River Terrace (RT)
- Open Carr Vale Farmland (OCVF)
- Vale Farmland (VF)
- Vale Fringe (VFR)
- Lowland Rolling Farmland (LRF)
- Lowland Undulating Farmland (LUF)
- Transitional Farmland (TF)
- Chalk Foothills (CF)
- Chalk Wolds Rolling Farmland (CW)
- Limestone Foothills (LF)
- Upland Pasture Gritstone (UPG)
- Gritstone Low Moorland (GLM)
- Character Type, Gritstone High Moorland Slope (GHMS)

Scale 1:8,000



(C) Crown Copyright and database right 2011. Ordnance Survey 100017946 North Yorkshire County Council

**NYCC/BES/18376**  
**Managing Landscape Change**

**ASMRP 1.2**  
**LANDSCAPE CHARACTER**

Drawn By	KJ
Checked By	AT
Approved By	JG
Drawing No	CS_049966_01_033_Rev1
Date	23 September 2011

**CAPITA SYMONDS**  
The Capita Building  
Kingmoor Business Park  
Carlisle  
CA6 4SJ





**Key**

**Visual Aspects**

- Long Distance View
- Medium Distance View
- Short Distance View
- Prominent Feature
- Field Survey Locations
- Visual Boundary
- Key Ridgelines

**Features**

- PRoW and Access
- Scrub
- Parkland
- Woodland
- Watercourses
- 500m Buffer
- Sample Area

**Character Types**

- Levels Farmland (LF)
- River Plain Farmland (RPF)
- River Terrace (RT)
- Open Carr Vale Farmland (OCVF)
- Vale Farmland (VF)
- Vale Fringe (VFR)
- Lowland Rolling Farmland (LRF)
- Lowland Undulating Farmland (LUF)
- Transitional Farmland (TF)
- Chalk Foothills (CF)
- Chalk Wolds Rolling Farmland (CW)
- Limestone Foothills (LF)
- Upland Pasture Gritstone (UPG)
- Gritstone Low Moorland (GLM)
- Character Type, Gritstone High Moorland Slope (GHMS)

Scale 1:8,000

Client

(C) Crown Copyright and database right 2011. Ordnance Survey 100017946 North Yorkshire County Council

**NYCC/BES/18376**  
**Managing Landscape Change**

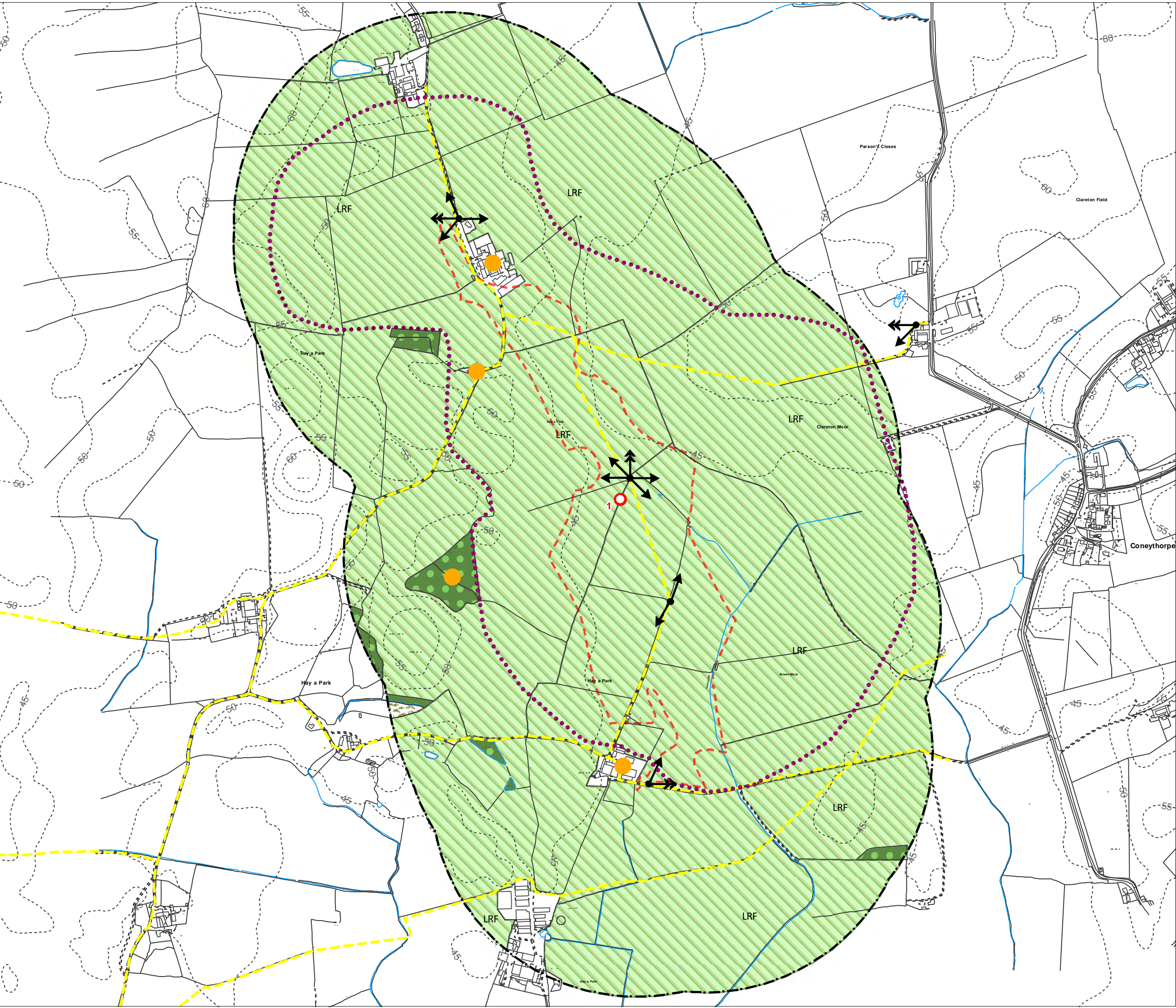
**ASMRP 2**  
**LANDSCAPE CHARACTER**

Drawn By	KJ
Checked By	AT
Approved By	JG
Drawing No	CS_049966_01_034_Rev1
Date	23 September 2011

**CAPITA SYMONDS**

The Capita Building  
Kingmoor Business Park  
Carlisle  
CA6 4SJ





**Key**

**Visual Aspects**

- Long Distance View
- Medium Distance View
- Short Distance View

**Features**

- PRoW and Access
- Scrub
- Parkland
- Woodland
- Watercourses
- 500m Buffer
- Sample Area

Prominent Feature

Field Survey Locations

Visual Boundary

Key Ridgetlines

**Character Types**

- Levels Farmland (LF)
- River Plain Farmland (RPF)
- River Terrace (RT)
- Open Carr Vale Farmland (OCVF)
- Vale Farmland (VF)
- Vale Fringe (VFR)
- Lowland Rolling Farmland (LRF)
- Lowland Undulating Farmland (LUF)
- Transitional Farmland (TF)
- Chalk Foothills (CF)
- Chalk Wolds Rolling Farmland (CW)
- Limestone Foothills (LF)
- Upland Pasture Gritstone (UPG)
- Gritstone Low Moorland (GLM)
- Character Type, Gritstone High Moorland Slope (GHMS)

Scale 1:8,500

Client

(C) Crown Copyright and database right 2011. Ordnance Survey 100017946 North Yorkshire County Council

**NYCC/BES/18376**  
**Managing Landscape Change**

**ASMRP 3**  
**LANDSCAPE CHARACTER**

Drawn By	KJ
Checked By	AT
Approved By	JG
Drawing No	CS_049966_01_035_Rev1
Date	23 September 2011

**CAPITA SYMONDS**

The Capita Building  
Kingmoor Business Park  
Carlisle  
CA6 4SJ



**Key**

**Visual Aspects**

- Long Distance View
- Medium Distance View
- Short Distance View
- Prominent Feature
- Field Survey Locations
- Visual Boundary
- Key Ridgelines

**Features**

- PRoW and Access
- Scrub
- Parkland
- Woodland
- Watercourses
- Sample Area
- 500m Buffer

**Character Types**

- Levels Farmland (LF)
- River Plain Farmland (RPF)
- River Terrace (RT)
- Open Carr Vale Farmland (OCVF)
- Vale Farmland (VF)
- Vale Fringe (VFR)
- Lowland Rolling Farmland (LRF)
- Lowland Undulating Farmland (LUF)
- Transitional Farmland (TF)
- Chalk Foothills (CF)
- Chalk Wolds Rolling Farmland (CW)
- Limestone Foothills (LF)
- Upland Pasture Gritstone (UPG)
- Gritstone Low Moorland (GLM)
- Character Type, Gritstone High Moorland Slope (GHMS)

Scale 1:7,000

Client



(C) Crown Copyright and database right 2011. Ordnance Survey 100017946 North Yorkshire County Council

**NYCC/BES/18376**  
**Managing Landscape Change**

**ASMRP 4**  
**LANDSCAPE CHARACTER**

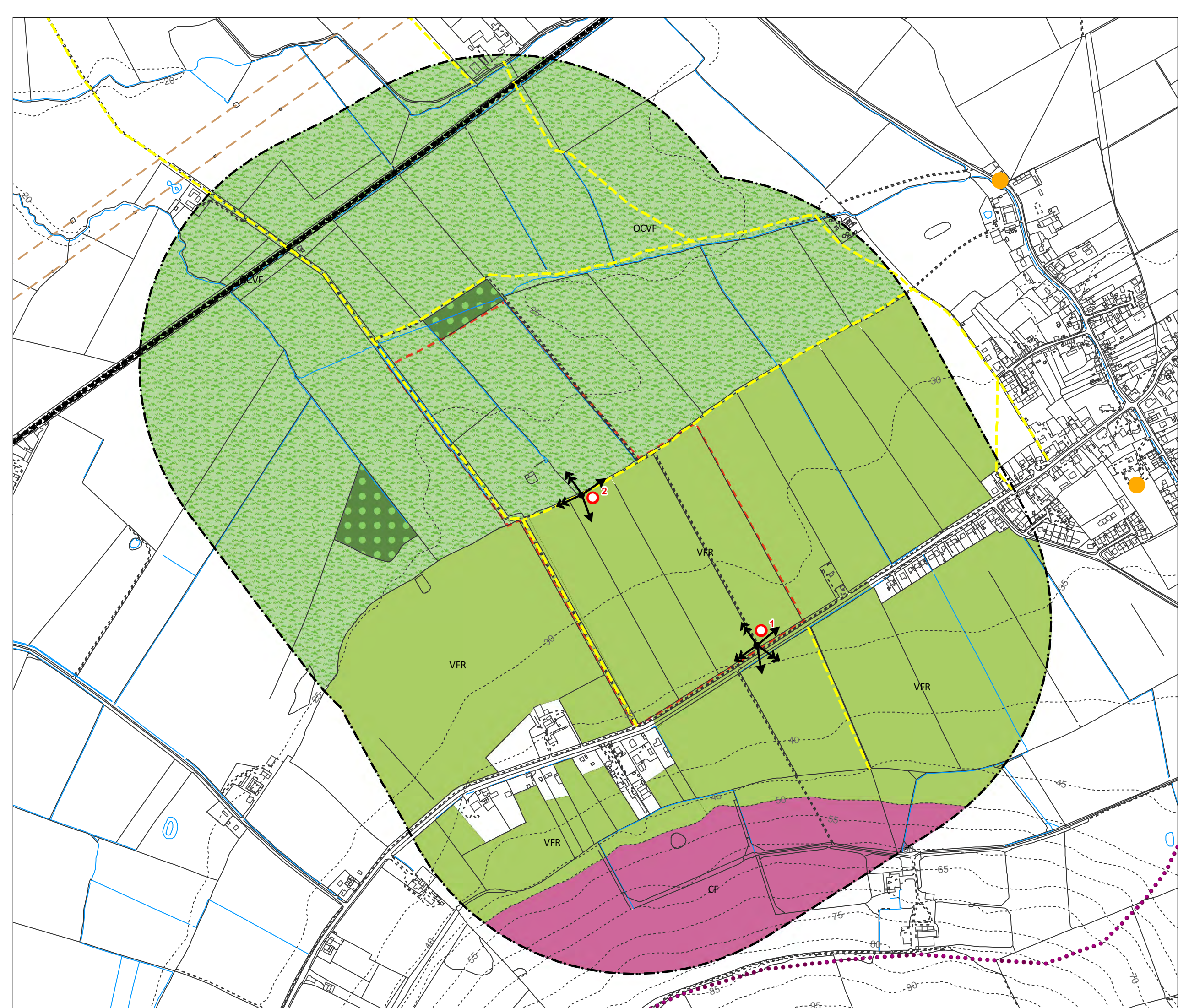
Drawn By	KJ
Checked By	AT
Approved By	JG
Drawing No	CS_049966_01_036_Rev1
Date	23 September 2011

**CAPITA SYMONDS**

The Capita Building  
Kingmoor Business Park  
Carlisle  
CA6 4SJ







**Key**

<b>Visual Aspects</b>	<b>Features</b>
↑ Long Distance View	— PRow and Access
↑ Medium Distance View	▨ Scrub
▲ Short Distance View	▨ Parkland
● Prominent Feature	▨ Woodland
● Field Survey Locations	▨ Watercourses
●●● Visual Boundary	▨ Sample Area
— Key Ridgelines	▨ 500m Buffer

**Character Types**

- ▨ Levels Farmland (LF)
- ▨ River Plain Farmland (RPF)
- ▨ River Terrace (RT)
- ▨ Open Carr Vale Farmland (OCVF)
- ▨ Vale Farmland (VF)
- ▨ Vale Fringe (VFR)
- ▨ Lowland Rolling Farmland (LRF)
- ▨ Lowland Undulating Farmland (LUF)
- ▨ Transitional Farmland (TF)
- ▨ Chalk Foothills (CF)
- ▨ Chalk Wolds Rolling Farmland (CW)
- ▨ Limestone Foothills (LF)
- ▨ Upland Pasture Gritstone (UPG)
- ▨ Gritstone Low Moorland (GLM)
- ▨ Character Type, Gritstone High Moorland Slope (GHMS)

Scale 1:7,000

Client



(C) Crown Copyright and database right 2011. Ordnance Survey 100017946 North Yorkshire County Council

**NYCC/BES/18376**  
**Managing Landscape Change**

**ASMRP 5**  
**LANDSCAPE CHARACTER**

Drawn By	KJ
Checked By	AT
Approved By	JG
Drawing No	CS_049966_01_037_Rev1
Date	23 September 2011

**CAPITA SYMONDS**

The Capita Building  
Kingmoor Business Park  
Carlisle  
CA6 4SJ





**Key**

<b>Visual Aspects</b>	<b>Features</b>
↑ Long Distance View	PRoW and Access
↑ Medium Distance View	Scrub
▲ Short Distance View	Parkland
● Prominent Feature	Woodland
● Field Survey Locations	Watercourses
● Visual Boundary	Sample Area
● Key Ridgelines	500m Buffer

**Character Types**

- Levels Farmland (LF)
- River Plain Farmland (RPF)
- River Terrace (RT)
- Open Carr Vale Farmland (OCVF)
- Vale Farmland (VF)
- Vale Fringe (VFR)
- Lowland Rolling Farmland (LRF)
- Lowland Undulating Farmland (LUF)
- Transitional Farmland (TF)
- Chalk Foothills (CF)
- Chalk Wolds Rolling Farmland (CW)
- Limestone Foothills (LF)
- Upland Pasture Gritstone (UPG)
- Gritstone Low Moorland (GLM)
- Character Type, Gritstone High Moorland Slope (GHMS)

Scale 1:7,000

Client

(C) Crown Copyright and database right 2011. Ordnance Survey 100017946 North Yorkshire County Council

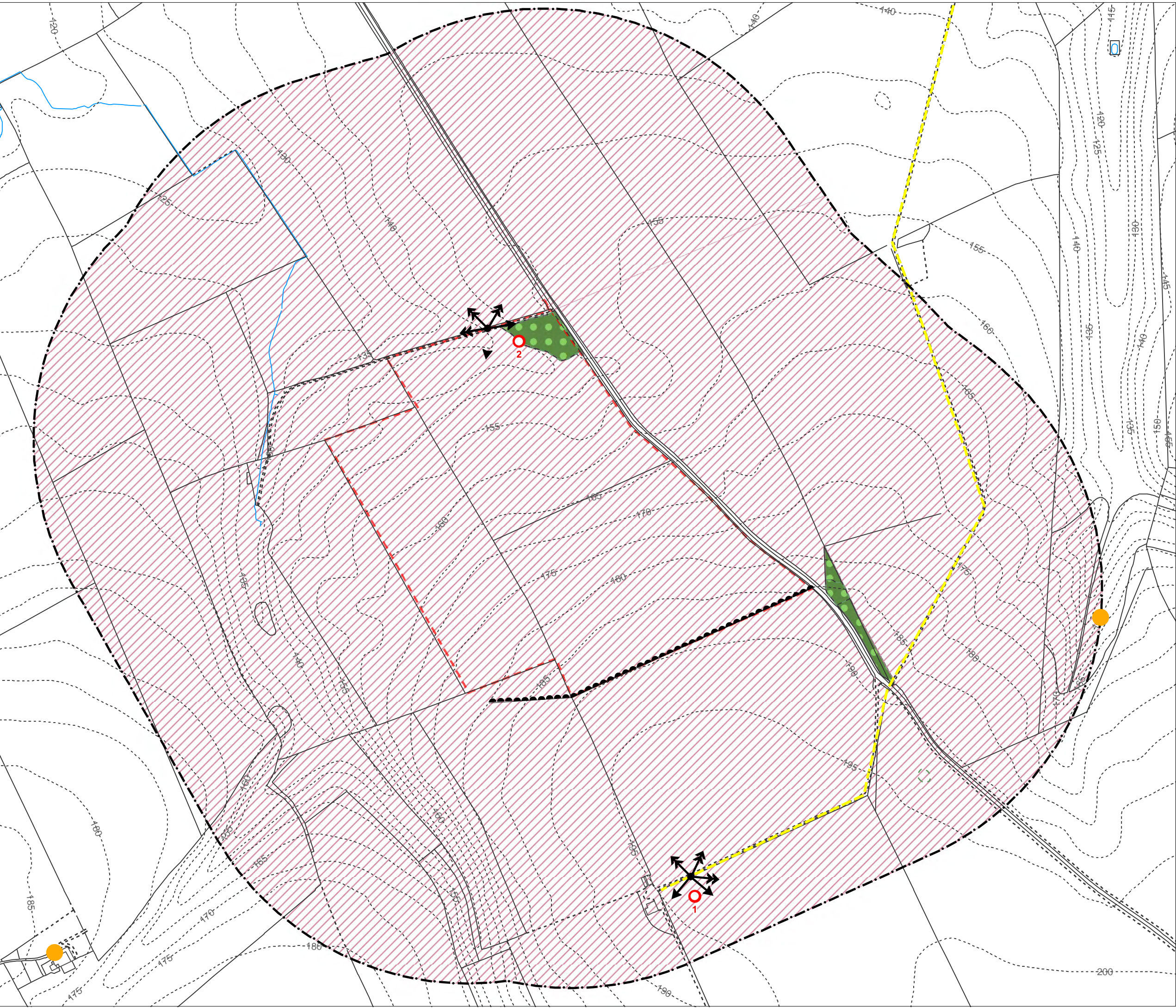
**NYCC/BES/18376**  
**Managing Landscape Change**

**ASMRP 6**  
**LANDSCAPE CHARACTER**

Drawn By	KJ
Checked By	AT
Approved By	JG
Drawing No	CS_049966_01_038_Rev1
Date	23 September 2011

**CAPITA SYMONDS**  
The Capita Building  
Kingmoor Business Park  
Carlisle  
CA6 4SJ





**Key**

<b>Visual Aspects</b>	<b>Features</b>
↑ Long Distance View	PRoW and Access
↑ Medium Distance View	Scrub
↑ Short Distance View	Parkland
● Prominent Feature	Woodland
● Field Survey Locations	Watercourses
● Visual Boundary	Sample Area
● Key Ridgelines	500m Buffer

**Character Types**

- Levels Farmland (LF)
- River Plain Farmland (RPF)
- River Terrace (RT)
- Open Carr Vale Farmland (OCVF)
- Vale Farmland (VF)
- Vale Fringe (VFR)
- Lowland Rolling Farmland (LRF)
- Lowland Undulating Farmland (LUF)
- Transitional Farmland (TF)
- Chalk Foothills (CF)
- Chalk Wolds Rolling Farmland (CW)
- Limestone Foothills (LF)
- Upland Pasture Gritstone (UPG)
- Gritstone Low Moorland (GLM)
- Character Type, Gritstone High Moorland Slope (GHMS)

Scale 1:6,000

Client

(C) Crown Copyright and database right 2011. Ordnance Survey 100017946 North Yorkshire County Council

**NYCC/BES/18376  
Managing Landscape Change**

**ASMRP 7  
LANDSCAPE CHARACTER**

Drawn By	KJ
Checked By	AT
Approved By	JG
Drawing No	CS_049966_01_039_Rev1
Date	23 September 2011

**CAPITA SYMONDS**  
The Capita Building  
Kingmoor Business Park  
Carlisle  
CA6 4SJ





**Key**

**Visual Aspects**

- ↑ Long Distance View
- ↑ Medium Distance View
- ▲ Short Distance View
- Prominent Feature
- Field Survey Locations
- Visual Boundary
- Key Ridgelines

**Features**

- PRoW and Access
- Scrub
- Parkland
- Woodland
- Watercourses
- Sample Area
- 500m Buffer

**Character Types**

- Levels Farmland (LF)
- River Plain Farmland (RPF)
- River Terrace (RT)
- Open Carr Vale Farmland (OCVF)
- Vale Farmland (VF)
- Vale Fringe (VFR)
- Lowland Rolling Farmland (LRF)
- Lowland Undulating Farmland (LUF)
- Transitional Farmland (TF)
- Chalk Foothills (CF)
- Chalk Wolds Rolling Farmland (CW)
- Limestone Foothills (LF)
- Upland Pasture Gritstone (UPG)
- Gritstone Low Moorland (GLM)
- Character Type, Gritstone High Moorland Slope (GHMS)

Scale 1:8,000

Client

(C) Crown Copyright and database right 2011. Ordnance Survey 100017946 North Yorkshire County Council

**NYCC/BES/18376**  
**Managing Landscape Change**

**ASMRP 8**  
**LANDSCAPE CHARACTER**

Drawn By	KJ
Checked By	AT
Approved By	JG
Drawing No	CS_049966_01_040_Rev1
Date	23 September 2011

**CAPITA SYMONDS**

The Capita Building  
Kingmoor Business Park  
Carlisle  
CA6 4SJ





**Key**

**Visual Aspects**

- ↑ Long Distance View
- ↑ Medium Distance View
- ▲ Short Distance View
- Prominent Feature
- Field Survey Locations
- ⋯ Visual Boundary
- Key Ridgelines

**Features**

- PRow and Access
- ▨ Scrub
- ▨ Parkland
- ▨ Woodland
- ▨ Watercourses
- - - Sample Area
- - - 500m Buffer

**Character Types**

- ▨ Levels Farmland (LF)
- ▨ River Plain Farmland (RPF)
- ▨ River Terrace (RT)
- ▨ Open Carr Vale Farmland (OCVF)
- ▨ Vale Farmland (VF)
- ▨ Vale Fringe (VFR)
- ▨ Lowland Rolling Farmland (LRF)
- ▨ Lowland Undulating Farmland (LUF)
- ▨ Transitional Farmland (TF)
- ▨ Chalk Foothills (CF)
- ▨ Chalk Wolds Rolling Farmland (CW)
- ▨ Limestone Foothills (LF)
- ▨ Upland Pasture Gritstone (UPG)
- ▨ Gritstone Low Moorland (GLM)
- ▨ Character Type, Gritstone High Moorland Slope (GHMS)

Scale 1:7,000

Client

(C) Crown Copyright and database right 2011. Ordnance Survey 100017946 North Yorkshire County Council

**NYCC/BES/18376**  
**Managing Landscape Change**

**ASMRP 9**  
**LANDSCAPE CHARACTER**

Drawn By	KJ
Checked By	AT
Approved By	JG
Drawing No	CS_049966_01_041_Rev1
Date	23 September 2011

**CAPITA SYMONDS**

The Capita Building  
Kingmoor Business Park  
Carlisle  
CA6 4SJ





**Key**

<b>Visual Aspects</b>	<b>Features</b>
↑ Long Distance View	— PRoW and Access
↑ Medium Distance View	▨ Scrub
▲ Short Distance View	■ Parkland
● Prominent Feature	■ Woodland
● Field Survey Locations	— Watercourses
● Visual Boundary	▭ Sample Area
▲ Key Ridgelines	▭ 500m Buffer

**Character Types**

- Levels Farmland (LF)
- River Plain Farmland (RPF)
- ▨ River Terrace (RT)
- ▨ Open Carr Vale Farmland (OCVF)
- ▨ Vale Farmland (VF)
- ▨ Vale Fringe (VFR)
- ▨ Lowland Rolling Farmland (LRF)
- ▨ Lowland Undulating Farmland (LUF)
- ▨ Transitional Farmland (TF)
- Chalk Foothills (CF)
- ▨ Chalk Wolds Rolling Farmland (CW)
- ▨ Limestone Foothills (LF)
- Upland Pasture Gritstone (UPG)
- Gritstone Low Moorland (GLM)
- Character Type, Gritstone High Moorland Slope (GHMS)

Scale 1:7,000

Client



(C) Crown Copyright and database right 2011. Ordnance Survey 100017946 North Yorkshire County Council

**NYCC/BES/18376**  
**Managing Landscape Change**

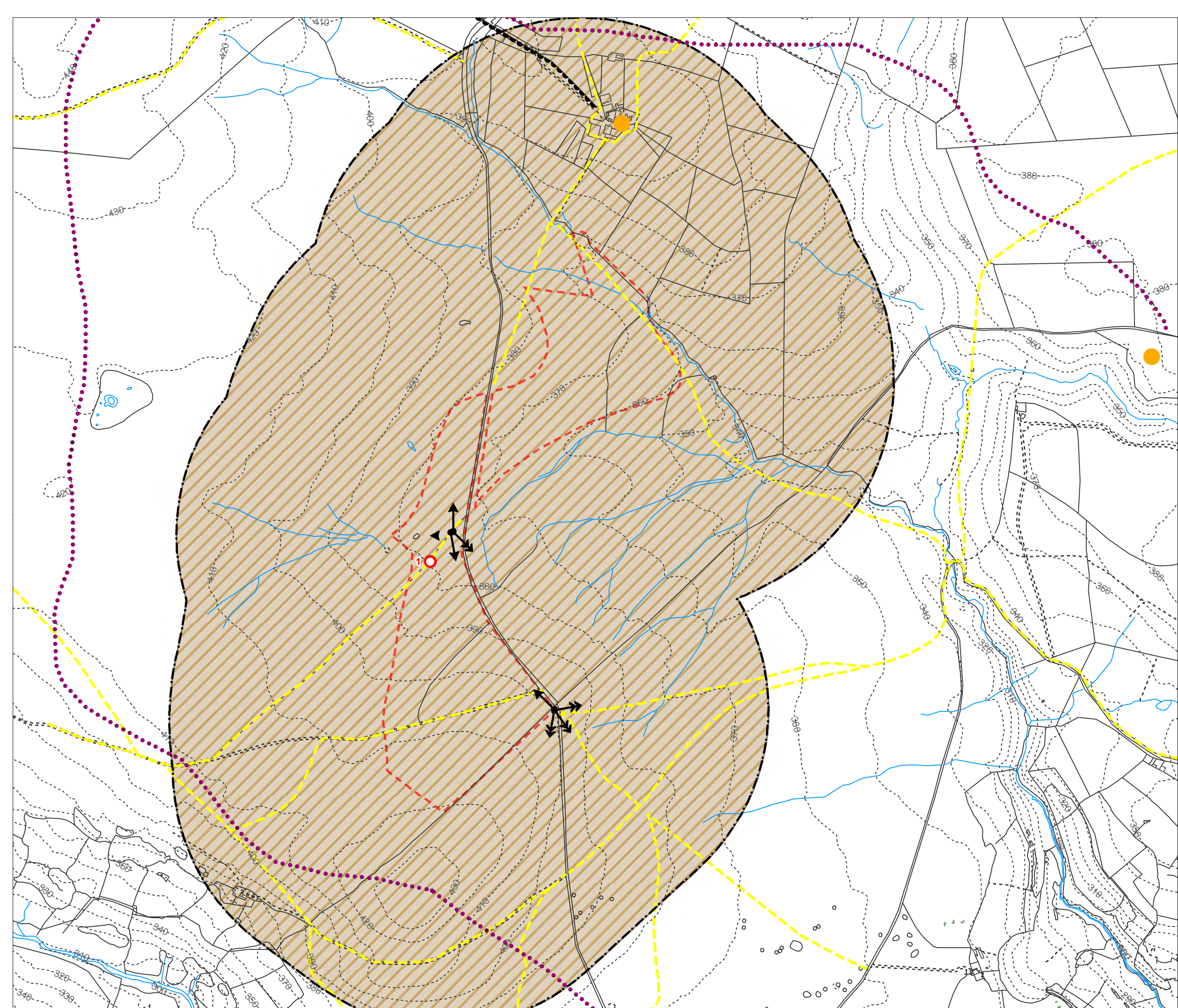
**ASMRP 12**  
**LANDSCAPE CHARACTER**

Drawn By	KJ
Checked By	AT
Approved By	JG
<b>Drawing No</b>	<b>CS_049966_01_042_Rev1</b>
Date	23 September 2011

**CAPITA SYMONDS**

The Capita Building  
Kingmoor Business Park  
Carlisle  
CA6 4SJ





**Key**

<b>Visual Aspects</b>	<b>Features</b>
↑ Long Distance View	--- PRoW and Access
↑ Medium Distance View	▨ Scrub
↑ Short Distance View	▨ Parkland
● Prominent Feature	▨ Woodland
● Field Survey Locations	▨ Watercourses
● Visual Boundary	▨ Sample Area
--- Key Ridgelines	▨ 500m Buffer

**Character Types**

- ▨ Levels Farmland (LF)
- ▨ River Plain Farmland (RPF)
- ▨ River Terrace (RT)
- ▨ Open Carr Vale Farmland (OCVF)
- ▨ Vale Farmland (VF)
- ▨ Vale Fringe (VFR)
- ▨ Lowland Rolling Farmland (LRF)
- ▨ Lowland Undulating Farmland (LUF)
- ▨ Transitional Farmland (TF)
- ▨ Chalk Foothills (CF)
- ▨ Chalk Wolds Rolling Farmland (CW)
- ▨ Limestone Foothills (LF)
- ▨ Upland Pasture Gritstone (UPG)
- ▨ Gritstone Low Moorland (GLM)
- ▨ Character Type, Gritstone High Moorland Slope (GHMS)

Scale 1:8,088

Client

(C) Crown Copyright and database right 2011. Ordnance Survey 100017946 North Yorkshire County Council

**NYCC/BES/18376  
Managing Landscape Change**

**ASMRP 14  
LANDSCAPE CHARACTER**

Drawn By	KJ
Checked By	AT
Approved By	JG
<b>Drawing No</b>	<b>CS_049966_01_043_Rev1</b>
Date	23 September 2011

**CAPITA SYMONDS**

The Capita Building  
Kingmoor Business Park  
Carlisle  
CA6 4SJ